

FED. ROAD DIST. NO.	STATE	PROJ. NO.	FISCAL YEAR	SHEET NO.	TOTAL SHEETS
	OKLA.				

DESCRIPTION	REVISIONS	DATE

SECTION CORNER - O.D.O.T. D-22-500
 FOUND AND ACCEPTED A #4 BAR. LOCATION IS IN AGREEMENT WITH OKLAHOMA CERTIFIED CORNER RECORDS FILED IN 2010. THE REFERENCE MONUMENTS WERE FOUND AND VERIFIED. LOCATION SEEMS TO BE IN HARMONY WITH SURROUNDING IMPROVEMENTS. THE MONUMENT REFERENCED IN OKLAHOMA CERTIFIED CORNER RECORDS FILED IN 2004 WAS NOT FOUND.

SECTION CORNER - O.D.O.T. D-22-501
 FOUND AND ACCEPTED A #4 BAR WITH "1737 OK" CAP. LOCATION IS IN AGREEMENT WITH OKLAHOMA CERTIFIED CORNER RECORDS FILED IN 2010. THE REFERENCE MONUMENTS WERE FOUND AND VERIFIED.

SECTION CORNER - O.D.O.T. D-22-502
 FOUND AND ACCEPTED A #4 BAR. LOCATION IS IN AGREEMENT WITH OKLAHOMA CERTIFIED CORNER RECORDS FILED IN 2010 AND IS IN HARMONY WITH EXISTING IMPROVEMENTS. TWO OF THE REFERENCE MONUMENTS WERE FOUND AND VERIFIED.

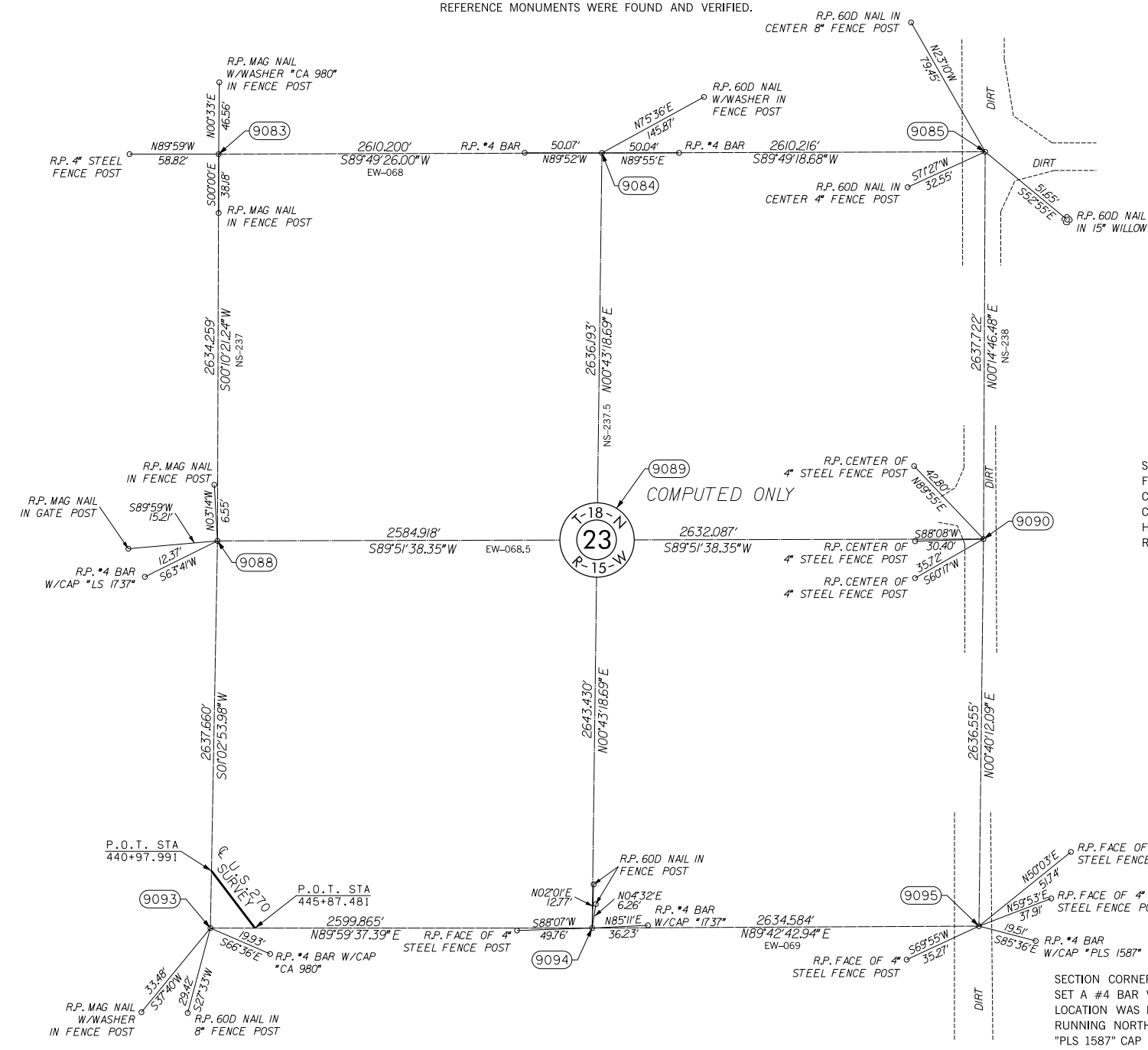
SECTION CORNER - O.D.O.T. D-22-504
 FOUND AND ACCEPTED #5 BAR. LOCATION IS IN AGREEMENT WITH OKLAHOMA CERTIFIED CORNER RECORDS FILED IN 2001 AND IS IN HARMONY WITH EXISTING IMPROVEMENTS. THREE OF THE REFERENCES WERE FOUND AND VERIFIED. ALSO FOUND A #4 BAR WITH "1737 OK" CAP REFERENCED IN OKLAHOMA CERTIFIED CORNER RECORDS FILED IN 2010 BUT DID NOT ACCEPT THIS LOCATION BECAUSE OF THE METHOD IN WHICH IT WAS SET AND IT DID NOT FIT SURROUNDING IMPROVEMENTS.

SECTION CORNER - O.D.O.T. D-22-505
 FOUND AND ACCEPTED A #4 BAR WITH "1737 OK" CAP. LOCATION IS IN AGREEMENT WITH OKLAHOMA CERTIFIED CORNER RECORDS FILED IN 2010 AND IS IN HARMONY WITH EXISTING IMPROVEMENTS. THE REFERENCE MONUMENTS WERE FOUND AND VERIFIED.

SECTION CORNER - O.D.O.T. D-22-508
 SET A #4 BAR WITH "CA 2054" CAP FOR CORNER. LOCATION WAS RE-ESTABLISHED BY USING EXISTING HIGHWAY PLANS AND SPLITTING FENCES RUNNING EAST WEST. ALSO FOUND A #4 BAR WITH "CA 980" CAP REFERENCED IN OKLAHOMA CERTIFIED CORNER RECORDS FILED IN 2004 BUT DID NOT ACCEPT THIS LOCATION BECAUSE IT DID NOT FIT EXISTING HIGHWAY PLANS.

SECTION CORNER - O.D.O.T. D-22-509
 FOUND AND ACCEPTED A 60D NAIL IN THE TOP CENTER OF AN 8" FENCE CORNER POST. LOCATION IS IN AGREEMENT WITH EXISTING INTERSECTION OF FENCE LINES. ALSO FOUND A #4 BAR WITH "1737 OK" CAP REFERENCED IN OKLAHOMA CERTIFIED CORNER RECORDS FILED IN 2010 BUT DID NOT ACCEPT THIS LOCATION BECAUSE THE METHOD IN WHICH IT WAS SET AND IT DID NOT FIT SURROUNDING IMPROVEMENTS.

SECTION CORNER - O.D.O.T. D-22-510
 SET A #4 BAR WITH "CA 2054" CAP FOR CORNER. LOCATION WAS RE-ESTABLISHED BY SPLITTING FENCES RUNNING NORTH SOUTH. ALSO FOUND A #4 BAR WITH "PLS 1587" CAP BUT DID NOT ACCEPT THIS LOCATION BECAUSE IT DID NOT FIT SURROUNDING IMPROVEMENTS. NO OKLAHOMA CERTIFIED CORNER RECORDS WAS ON FILE FOR THIS LOCATION.



NOTE: REFERENCE'S SHOWN ARE NOT TO SCALE.

OKLAHOMA DEPARTMENT OF TRANSPORTATION SURVEY DIVISION				
PLS	KH			
DRAWN	CF,SK			
CHECKED	KH			
APPROVED	KH			
CREW	JH,SA,BH,DR	SWO 4600 (1)	PROJECT NO. 17671(34)	SHEET NO. S38